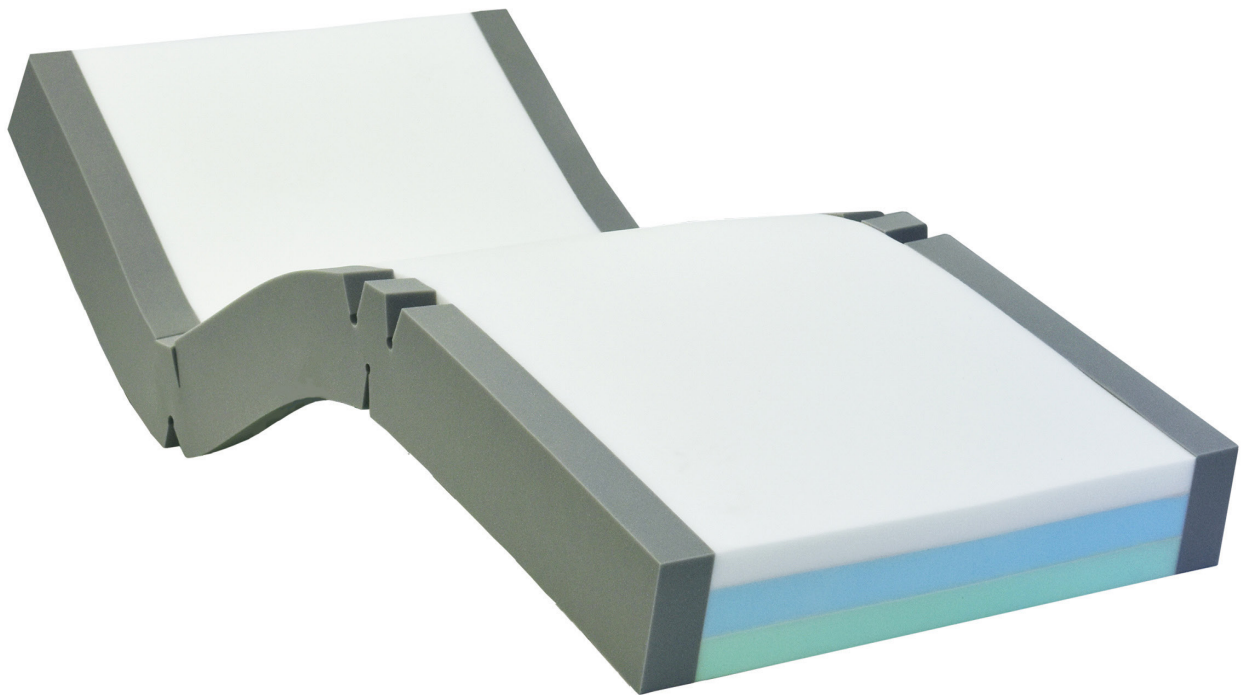


Healthcare
furniture,
enhancing
lives.

Caremed Alrick.

M9050 3 Core Mattress

Vapour permeable
upper to draw moisture
away from skin



Our range of clinically evaluated pressure care mattresses cover a broad spectrum of needs, from standard pressure care to deluxe heavy duty multiple layer pressure care. High quality foam is used in all mattresses, and the durable waterproof and vapour permeable covers are water resistant to 3 metres and are designed to draw moisture away from skin for longevity and patient comfort.

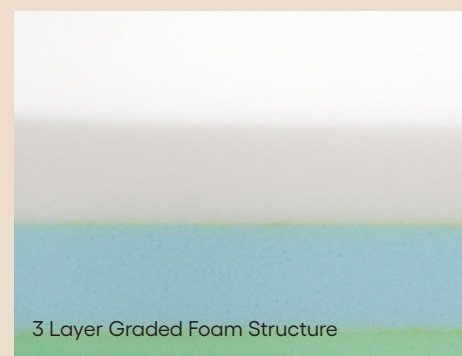
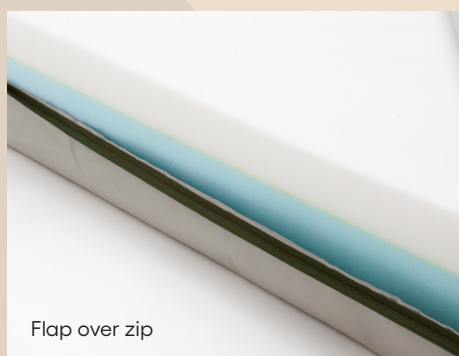
Specifications

Overall dimensions and product codes	M9050	1960 x 860 x 150mm
	M9050KS	1960 x 1050 x 150mm
	M9050EW	1960 x 1200 x 150mm
	M9050D	1960 x 1350 x 150mm
	M9050Q	1960 x 1480 x 150mm
	M9050K	1960 x 1780 x 150mm
SWL	140kg	
Warranty	2 yr	

Features

CORE

- 3 Layer Graded Foam Structure
- Visco Pressure Sensitive Memory Foam
- Effective weight distribution
- Relieves pressure points
- Resilient Mid-Core
- Firm Lower Layer



COVER

- Combination Cover
- Vapour Permeable Upper (draws moisture away from skin)
- Heavy Duty PVC base
- Flap over zip (stops fluid penetration)